

Power Source/Supply

USB

Ethernet/Internet

Cash Drawer Data Cable

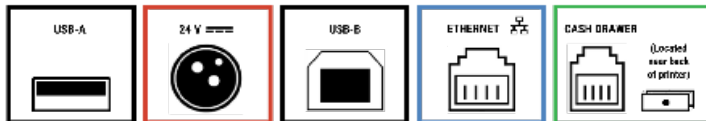


**Exatouch All-in-One Terminal**

POWER  
BUTTON  
(on back)

See following pages for Rear-Mount and independent-Mount CFD set up instructions.

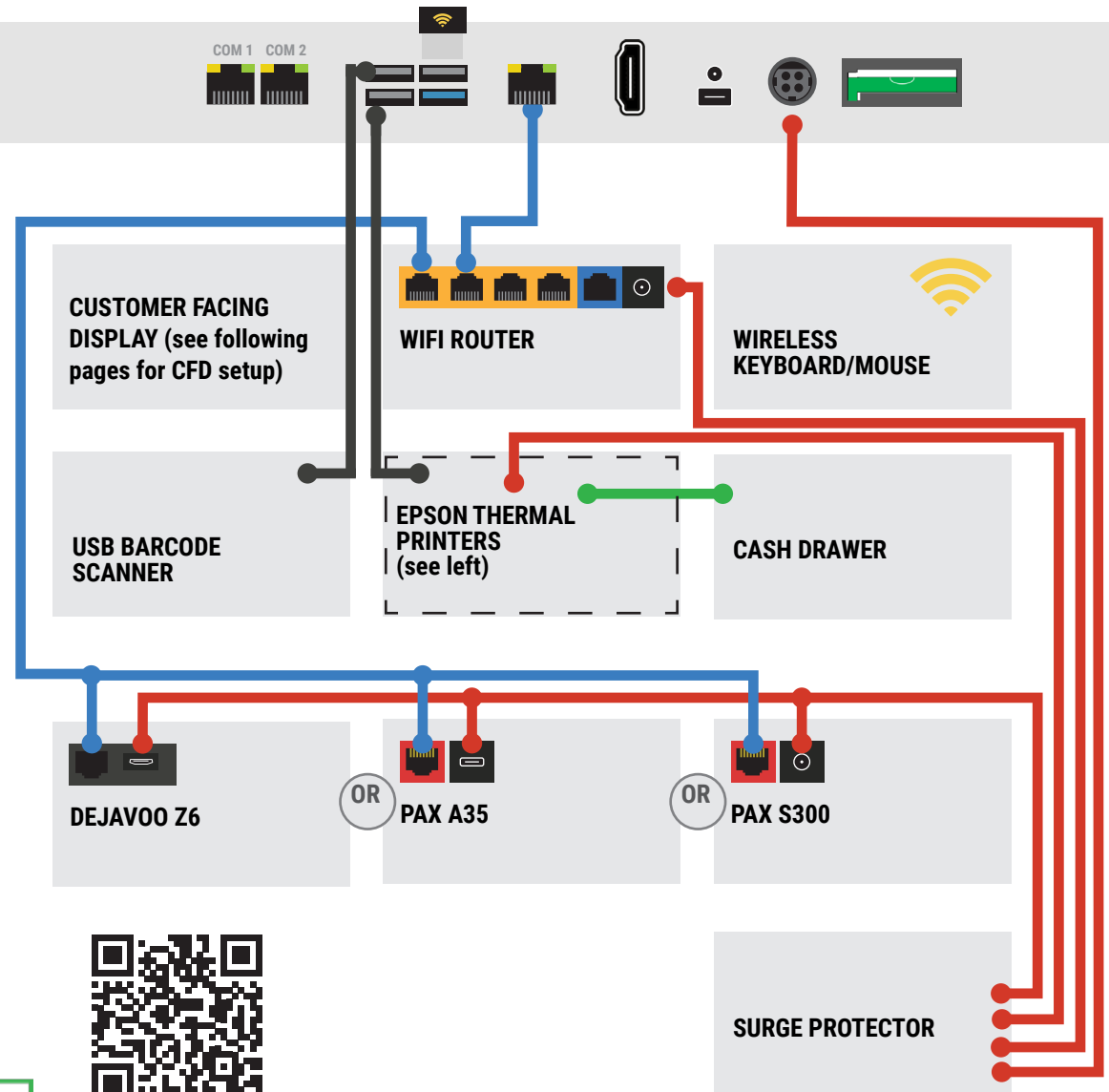
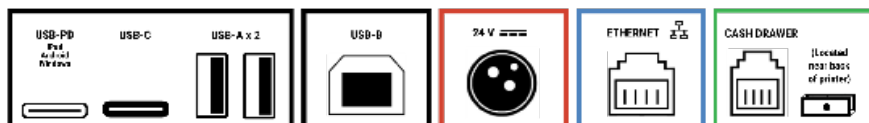
### EPSON THERMAL PRINTER TM-M30



### EPSON THERMAL PRINTER TM-M30ii



### EPSON THERMAL PRINTER TM-M30iii



Forgot to schedule your installation and training? No worries!  
Please email the Product Success Team so we can best assist you.

*Please contact the Product Success Team for assistance setting up  
your Exatouch All-in-One Terminal with Customer Facing Display.*

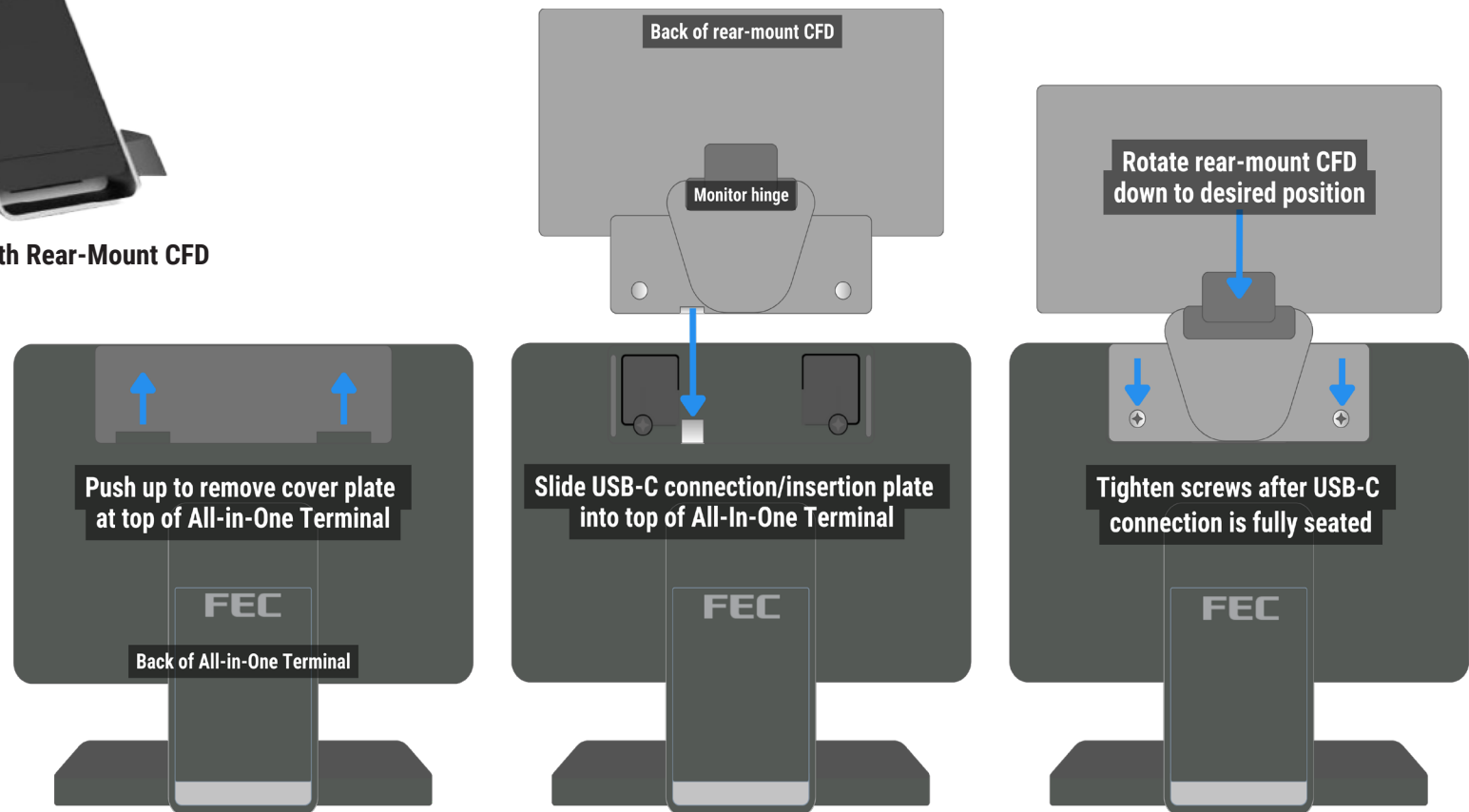


Power  
Button

Exatouch All-in-One Terminal with Rear-Mount CFD



**Rear-mount CFDs have the wiring incorporated into  
the display. Follow the instructions below to seat  
the CFD into the All-in-One Terminal.  
No external wiring is needed.**





## WIRING DIAGRAM - FEC PP 9735 WITH INDEPENDENT-MOUNT CFD

Please contact the Product Success Team for assistance setting up  
your Exatouch All-in-One Terminal with Customer Facing Display.



Exatouch All-in-One Terminal

The independent-mount CFD connects  
to the Smart DD  
port  
on the All-in-One Terminal.  
This CFD may be placed anywhere.



Independent-Mount Customer Facing Display