

WIRING DIAGRAM - FEC PP 9735

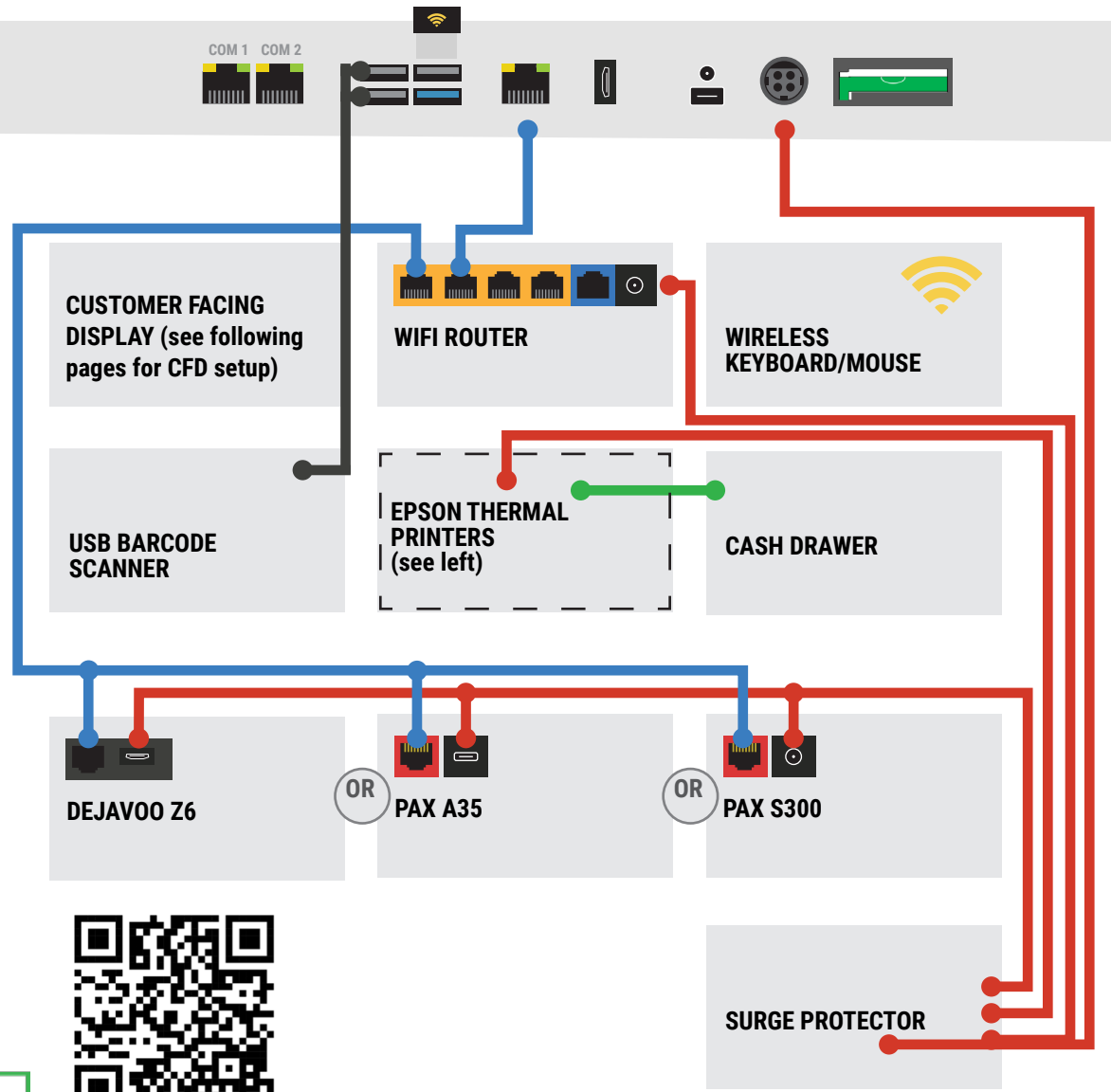
(see following pages for rear-mount and independent-mount CFD set up instructions)

- Power Source/Supply ■
- USB ■
- Ethernet/Internet ■
- Cash Drawer Data Cable ■

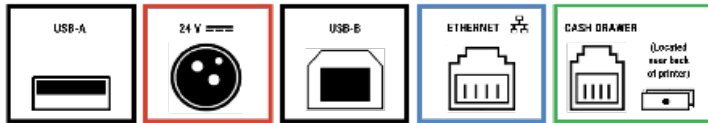


Exatouch All-in-One Terminal

POWER BUTTON (on back)



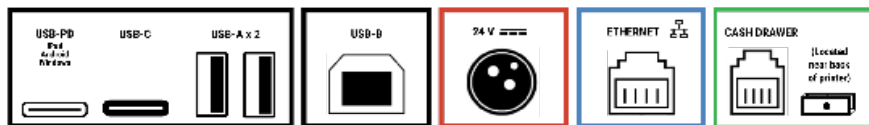
EPSON THERMAL PRINTER TM-M30



EPSON THERMAL PRINTER TM-M30ii



EPSON THERMAL PRINTER TM-M30iii



Forgot to schedule your installation and training? No worries!
Please email the Product Success Team so we can best assist you.



Please contact the Product Success Team for assistance setting up your Exatouch All-in-One Terminal with Customer Facing Display.

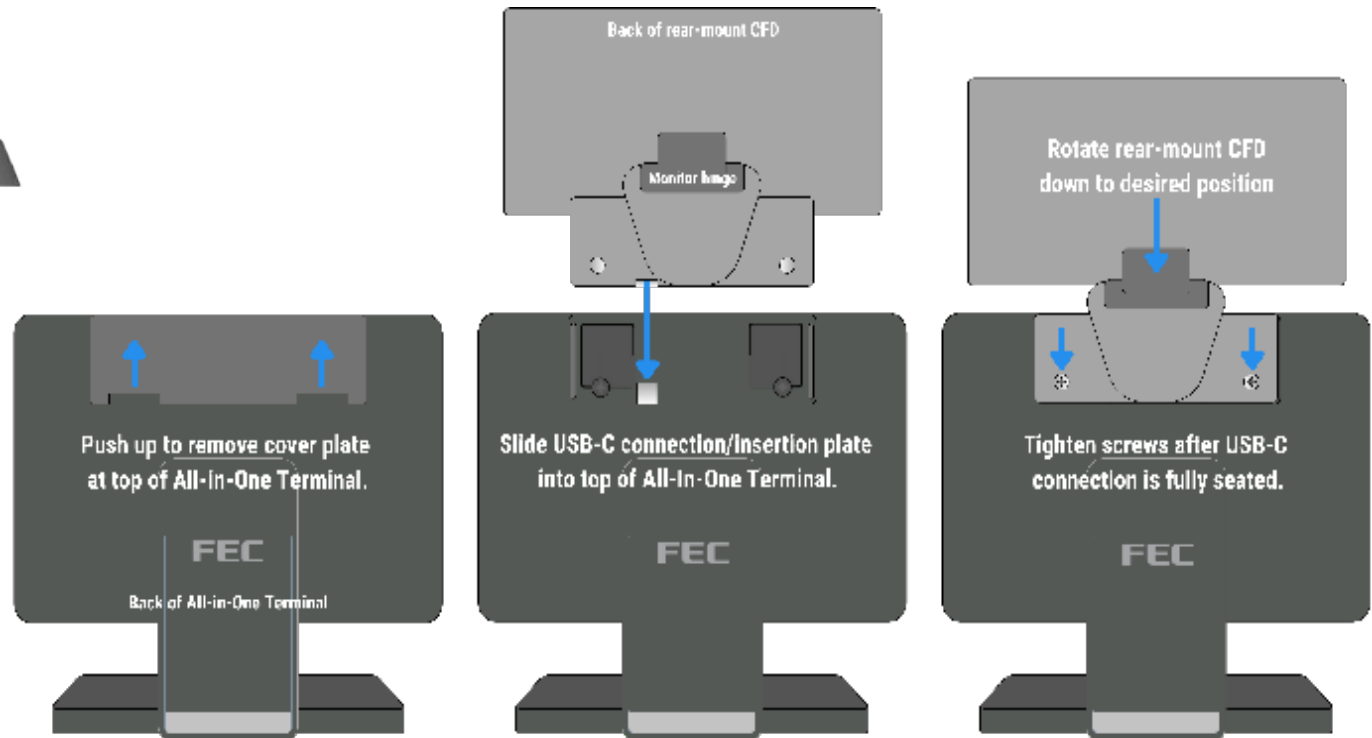


**POWER
BUTTON**

**Exatouch All-in-One Terminal
with rear-mount Customer Facing Display**



Rear-mount CFDs have the wiring incorporated into the display. Follow the instructions below to seat the CFD into the All-in-One Terminal. No external wiring is needed.

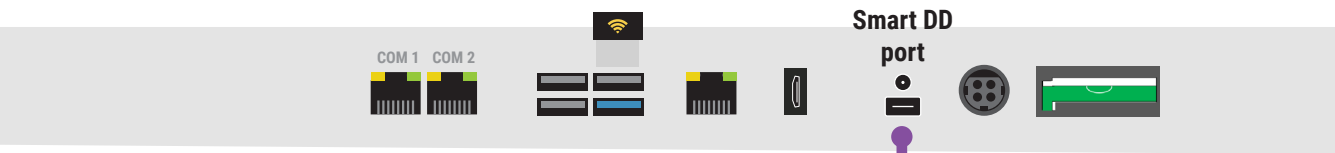




Please contact the Product Success Team for assistance setting up your Exatouch All-in-One Terminal with Customer Facing Display.



Exatouch All-in-One Terminal



The independent CFD connects to the Smart DD port on the All-in-One Terminal. This CFD may be placed anywhere.



Independent-mount Customer Facing Display